

Products: CMD

# CMD Trans

## Hardcopy Transfer from CMD

### via IEEE Bus / RS232

CMD Trans is a program for transferring hardcopy files from any kind of CMD to a PC



## **Contents**

1	Overview .....	2
2	Software Features.....	2
3	Hardware and Software Requirements.....	3
	Hardware Requirements .....	3
	Software Requirements.....	3
4	Connecting the Computer and Instrument.....	3
5	Installing the Software.....	4
6	Using CMD Trans, step-by-step instruction .....	5
7	Ordering Information.....	7

## **1 Overview**

With this application you can transfer, view or print hardcopy files from a CMD to a PC, via the serial interface or IEEE bus.

## **2 Software Features**

CMD Trans is used for transferring hardcopies from all types of CMD instruments via the IEC/IEEE bus or the serial interface. The software can:

- Select files on the CMD to transfer to the PC
- Transfe the files to a directory on the PC
- Display and print selected files.
- Select the GPIB address to access the CMD and switch between the IEEE bus and the RS232 serial interface

## **3 Hardware and Software Requirements**

### **Hardware Requirements**

The software runs on any PC with the following features:

- CPU: 486, Pentium or better, clock rate > 100 MHz
- RAM: ≥ 32 Mbytes (for Windows NT ≥ 48 Mbytes)
- Monitor: VGA color monitor or better
- IEC/IEEE bus: IEC/IEEE-bus interface Rohde & Schwarz IEEE 488.2 bus interface PS-B4, 1006.6207.04 or National Instruments AT-GPIB/TNT (not required for RS232 operation)

### **Software Requirements**

- Windows 95/98 or Windows NT (version 4.0 or updates)
- GPIB (IEC/IEEE-bus) driver installed (not required for RS232 operation)

## **4 Connecting the Computer and Instrument**

Connect the computer CMD Trans is to run on to the CMD you want to transfer hardcopies from. Several instruments can be connected at the same time via the IEEE bus. Selection is via the instrument's IEC/IEEE-bus address. Make sure that the addresses are unambiguously specified; an address may not be assigned twice.

## **5 Installing the Software**

CMD Trans is supplied as a set of files. Download these files, copy them if necessary to another PC, then install the software. The software can be installed either by downloading, or by installation disks. The setup program prompts for the installing directories and installs the software.

- **Downloading**

CMD Trans comes with 3 files, setup.exe, cmd\_trans.001 and cmd\_trans.002. Copy all 3 files to a directory on your PC (e.g. C:\TEMP).

To install CMD Trans run the downloaded setup.exe.

- **Creating Installation Disks**

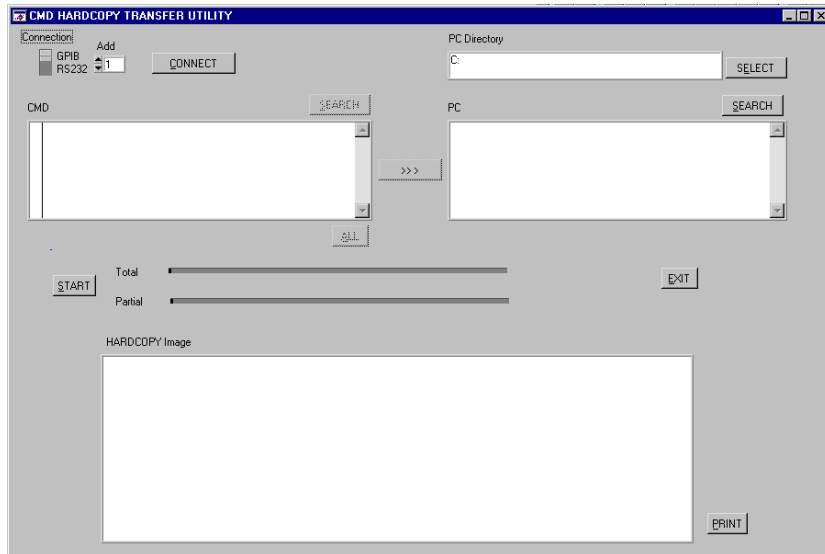
You will need 2 disks. Copy the downloaded files:

1. Copy setup.exe and cmd\_trans.001 to DISK 1 and cmd\_trans.002 to DISK2.

2. Insert DISK1 into the floppy drive of your PC and run setup.exe. Insert DISK2 when prompted.

## 6 Using CMD Trans, step-by-step instruction

1. Start CMD\_TRANS.EXE. The following window appears:

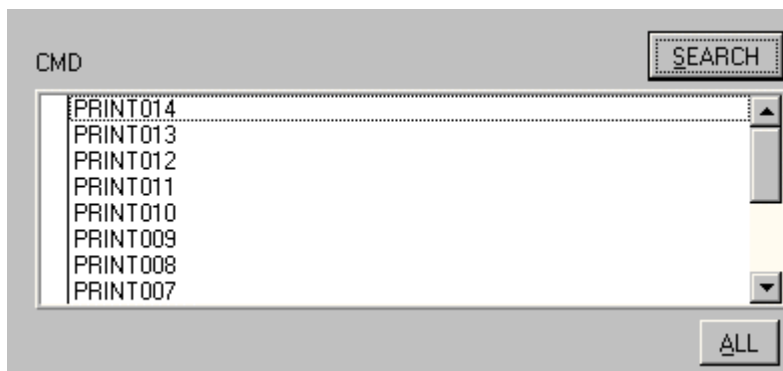


2. Select the interface (IEEE or RS232) which shall be used for transferring data between the CMD and the PC.  
For IEEE, enter the IEC/IEEE-bus address of the instrument you want to get hardcopies from (you can get the bus address from the CMD setup - **[CONFIGURATION] {IEEE ADDRESS}**).  
For RS232, enter the port where the CMD is connected (COM1, COM2).
3. Press **CONNECT** to attach the instrument to the PC. If an error occurs while connecting, a message box will appear:



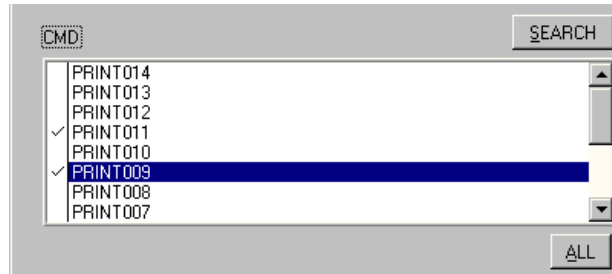
Check the connection and try again.

4. Press **SEARCH** above the "CMD" box. A list of all hardcopy files available on the CMD is shown in the listbox:

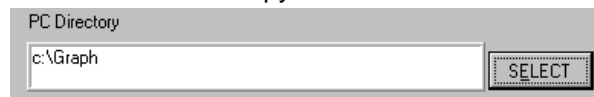


## CMD Trans – Hardcopy Transfer from CMD xx

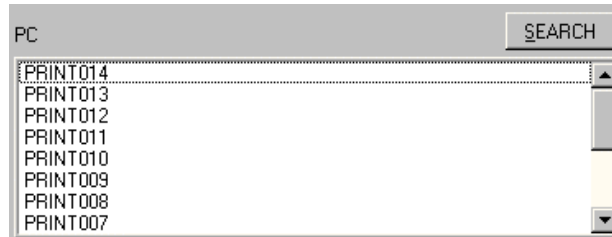
Select the files to transfer by clicking on the names in the list box. Selected files are shown with a checksign. To select all files, press **ALL**.



- Press **SELECT** beside the "PC Directory" box to choose the directory to which the CMD hardcopy files shall be transferred:



- Press **>>>** to complete the selection of the CMD files to transfer. The selected files are displayed in the left list box:

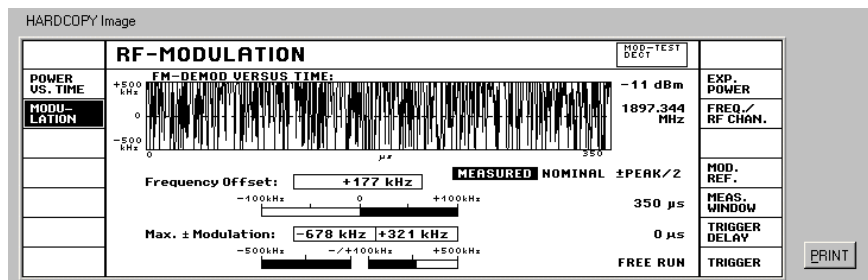


- Press **START** to download the selected files. During the download two slide bars monitor progress of the task:



After each file is transferred it is shown in the picture box.

- To view a transferred file, select the file in the listbox "PC" and press **SEARCH**. The file is then displayed:



- Press **PRINT** to print out the file. A selection window will appear to set up the printer.
- Press **EXIT** to close CMD Trans.

## 7 Ordering Information

### Mobile Station Testers

CMD 50	GSM900	1050.9008.50
CMD 52	GSM900	1050.9008.52
CMD 53	GSM900 and GSM1800	1050.9008.53
CMD 55	GSM900 and GSM1800	1050.9008.55
CMD 65	GSM900, GSM1800 and DECT	1050.9008.65

### Base Station Testers

CMD 54	GSM900	1050.9008.54
CMD 57	GSM1800	1050.9008.57

### DECT Tester

CMD 60	GSM900, GSM1800, DECT	1050.9008.60
CMD 65	GSM900, GSM1800, DECT	1050.9008.65

### CDMA Tester

CMD 80	IS95 CDMA	1050.9008.84
--------	-----------	--------------



**ROHDE & SCHWARZ**

ROHDE & SCHWARZ GmbH & Co. KG · Mühldorfstraße 15 · D-81671 München · P.O.B 80 14 69 · D-81614 München · Telephone  
+49 89 4129 -0 · Fax +49 89 4129 - 13777 · Internet: <http://www.rohde-schwarz.com>

*This application note and the supplied programs may only be used subject to the conditions of use set forth in the download area of the Rohde & Schwarz website.*